

Viola Time

Group Edition



BOOK 1
A COMPREHENSIVE, FIRST METHOD
BOOK FOR BEGINNER VIOLINISTS

Nicole LoBartolo

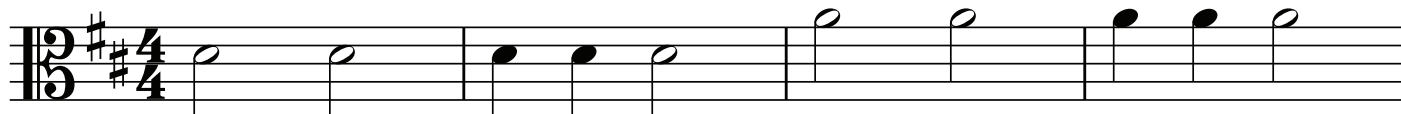
www.violintime.com

A Pastoral Afternoon in the Sunshine

Handy Hint!! Pluck/Pizzicato over the fingerboard where the string will vibrate more. This will give extra resonance to the sound!

Andante Pastorale

pizzicato



5



9



13



Sing min-im while plucking the minims
or waiting for the minim rests to ensure
they last for 2 counts
Sing 'ta' while plucking the crotchets

Try singing this piece in fixed
pitch to help you memorise
the notes...then try playing
it from memory!



Points for Parents

Purpose

- To learn the minim - 2 count notes
- To practise sight reading of open strings
- To practise playing from memory

Tips

- Pizzicato in time with the metronome
- Say 'min-im' while playing the minims to ensure they go for 2 counts (1 syllable per count)
- Try singing it in fixed pitch to help you memorise the notes, then try playing it from memory!

Teacher Checklist

- Can sing and play in time with the metronome or accompaniment
- Plucking over the fingerboard
- Correct Notes
- Good posture
- Can play from memory

Theory

A minim (half note) can be said as "min-im" and is the length of 2 crotchet beats

Andante means at an easy walking pace

Pastorale means pastorally

Gee Whiz!

Moderato means at a moderate speed

Moderato ♩ = 100

5 *simile*

9

13 *bow retake*

Don't forget to sing in fixed pitch before playing

D String Notes
(Open string-3rd finger)

D (open string)

E (1st finger)

F# (2nd finger)

G (3rd finger)



Points for Parents

Purpose

- To play with different bow speeds - fast WB for the crotchets and slow WB for the minims
- To learn to accent with the bow, on the notes marked with accents
- To learn the note G (3rd finger on D string)
- To learn correct left hand technique by having all fingers on the string where possible and correct left hand set up (shown in the picture)

Tips

- Set up fingers on the D string and check your left hand with the photo
- Is your thumb opposite your first finger?
- Is your left wrist relaxed and straight?
- Play with correct bow divisions (LH, UH, and WB)
- Sing first to help with pitch (getting the 3rd finger in tune)

Teacher Checklist

- Can play with correct rhythm and in tune
- Can play with correct left hand technique
- Can play with straight bows and correct bowing divisions
- Keeps all fingers down and on their fingertips

Theory



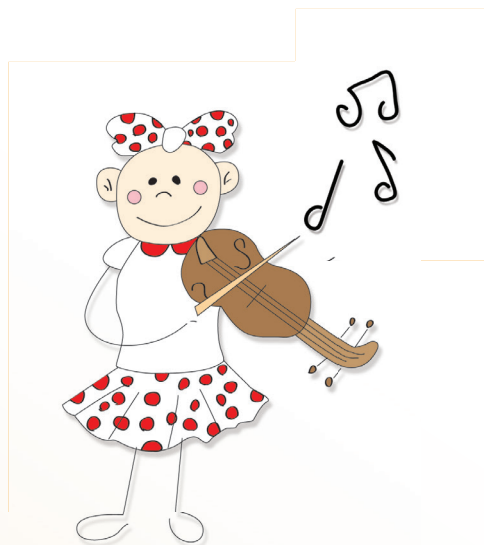
An accent (>) is used to make a particular note stand out. This is done by using a fast bow

CERTIFICATE OF COMPLETION



This is to certify that

has successfully completed
Viola Time Group



Date _____